

ThriveHomes



SAVE UP TO \$61,000*

DEPENDENT ON THE HOME DESIGN SELECTED

*Maximum savings of \$61k is only available for the Zepel 25 home design with Vogue façade built in the Queanbeyan-Palerang regional council area and terms and conditions apply.
For full terms and conditions visit our website www.thrivehomes.com.au



Build fast. Save big.

We've done the hard work for you – we've selected some of our best-selling home designs, combined them with a large range of premium inclusions and carefully curated colour schemes to get you your dream home faster and at a special price for a limited time only*.

How it works



Select from 4 of our best-selling home designs



Choose from 2 of our beautifully curated façades



Choose from 5 external colour schemes and from 5 internal colour schemes



Enjoy a specified list of premium inclusions



BUILD FAST

Build time commitment from 43 weeks*

SAVE BIG

Save up to \$61,000 on our top home designs depending on home design selected.‡

*Site start commitment of 12 weeks for house and land packages, 16 weeks for new builds on vacant land (greenfield sites).
‡Maximum savings of \$61k is only available for the Zepel 25 home design with Vogue façade built in the Queanbeyan-Palerang regional council area.
Terms and conditions apply see our website for full terms and conditions of this offer www.thrivehomes.com.au

Choose your
Home design



Zepel 25

5 BEDROOM FLOORPLAN

A place for families to thrive with five generously sized bedrooms, open plan kitchen, living and dining area, and alfresco. Plus an upstairs media room and front study. The Zepel 25 has everything you need under one roof.

FROM: \$503,735

FROM
\$442,200*

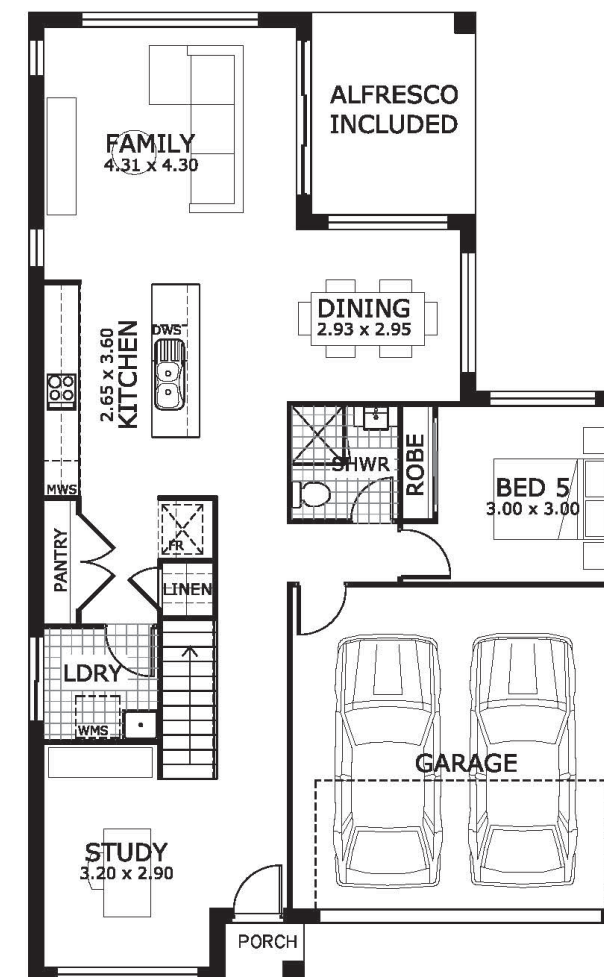


Pre-selected facade options

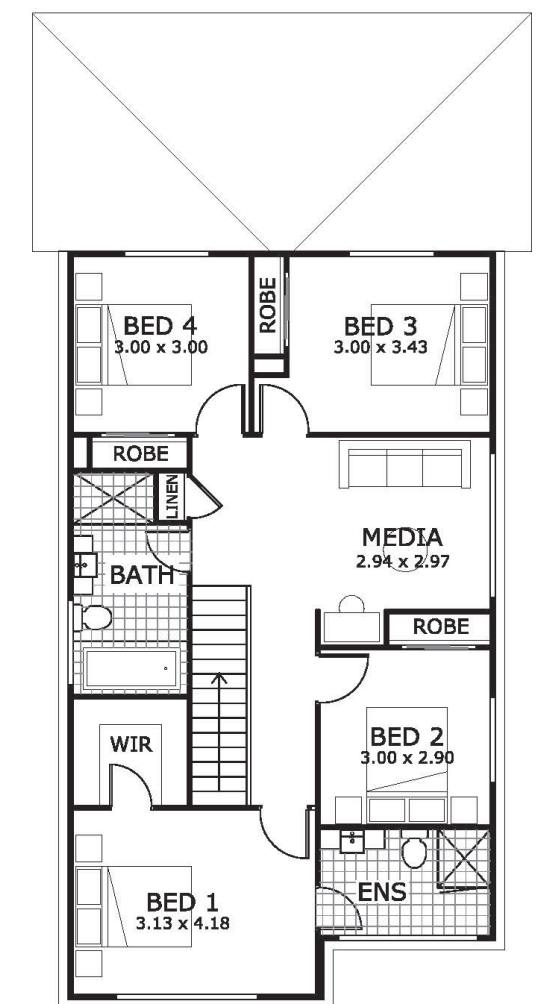


Choose from one of 2 external colour scheme options available for each of these facades.

Floorplan



Ground floor



First floor

*The starting from price is based on a standard block which is up to 350m² with up to 500mm fall across the block, 'M' class soil classification, all services within boundaries, garage setback up to 5.5m from front boundary and even cut and fill. The starting from price is applicable to homes with the Vogue facade built in the Queanbeyan-Palerang regional council area only and is subject to a geotechnical report and engineering design and excludes additional site costs, site specific BASIX/EERS requirements, Local Complying Authority or developer/estate requirements and guidelines, bushfire, flood, acoustic, unforeseen site conditions, building adjacent to sewer requirements, landscaping, internal upgrades, section 7.11 and s7.12 contributions (if applicable), and bonds. Regional house price loading applies. Thrive Homes reserves the right to review its pricing at any time, without notice. All prices are relevant at the time of publishing and may be out of date or superseded. Further terms and conditions apply - for full terms and conditions for our fast-track promotion www.thrivehomes.com.au. Please speak to a Sales Consultant to discuss current detailed home pricing for different designs, inclusions and regions.

Essence 22

5 BEDROOM FLOORPLAN

When it comes to living space, the Essence is in a class of its own. This design offers two separate living areas in a home compact enough to fit onto smaller blocks. The open plan living at the rear of the home creates a link between indoor and outdoor spaces that the entire family will enjoy.

FROM: \$460,875

FROM
\$403,600*

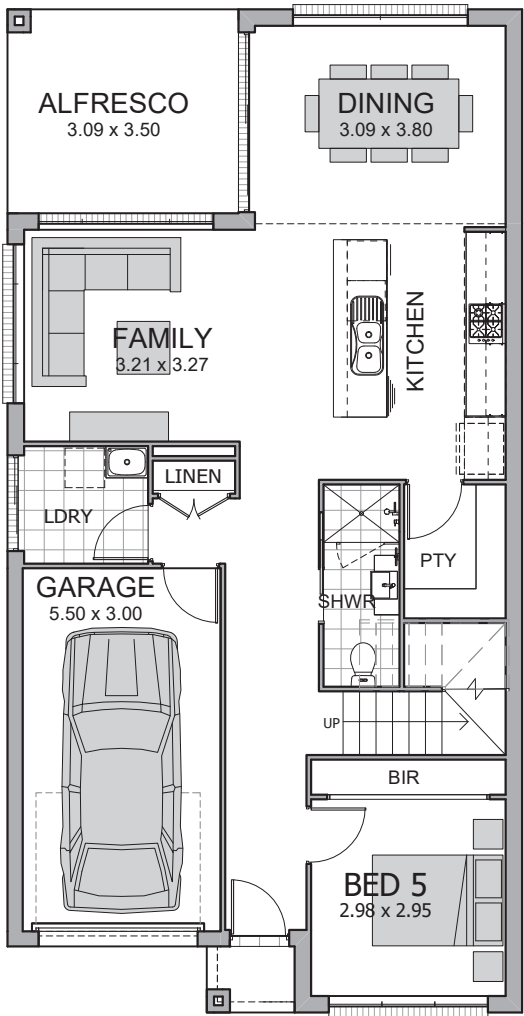


Pre-selected facade options

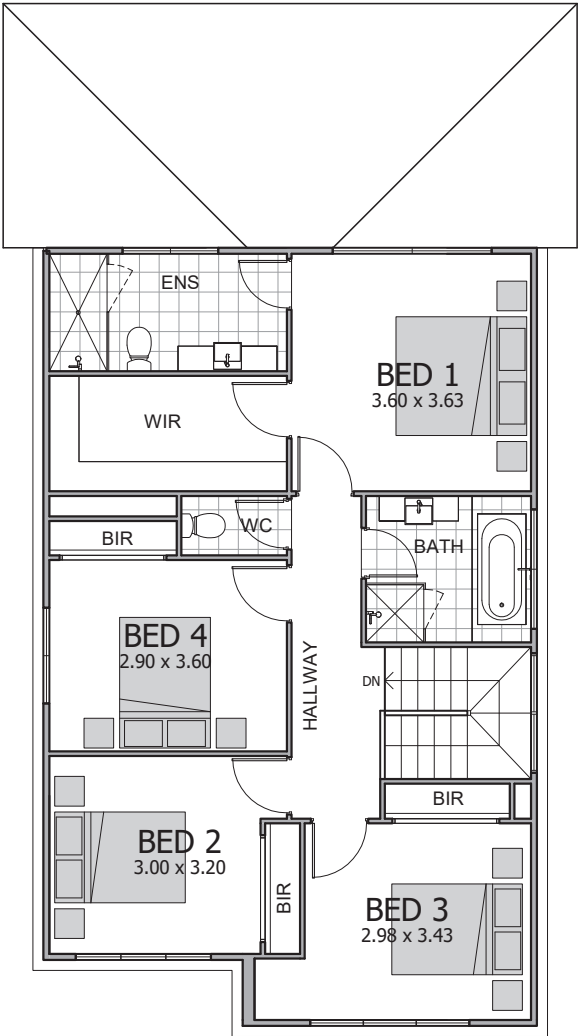


Choose from one of 2 external colour scheme options available for each of these facades.

Floorplan



Ground floor - 5 bedroom floorplan



First floor

*The starting from price is based on a standard block which is up to 350m² with up to 500mm fall across the block, 'M' class soil classification, all services within boundaries, garage setback up to 5.5m from front boundary and even cut and fill. The starting from price is applicable to homes with the Vogue facade built in the Queanbeyan-Palerang regional council area only and is subject to a geotechnical report and engineering design and excludes additional site costs, site specific BASIX/EERS requirements, Local Complying Authority or developer/estate requirements and guidelines, bushfire, flood, acoustic, unforeseen site conditions, building adjacent to sewer requirements, landscaping, internal upgrades, section 7.11 and s7.12 contributions (if applicable), and bonds. Regional house price loading applies. Thrive Homes reserves the right to review its pricing at any time, without notice. All prices are relevant at the time of publishing and may be out of date or superseded. Further terms and conditions apply - for full terms and conditions for our fast-track promotion www.thrivehomes.com.au. Please speak to a Sales Consultant to discuss current detailed home pricing for different designs, inclusions and regions.

Vibe 21

The Vibe is an elegant solution for shorter blocks. The master bedroom with ensuite and walk-in robe provides a retreat at the front of the home. The rear of the design features three more bedrooms as well as an open plan kitchen, living and dining areas, which flow through to the spacious alfresco. Also with a double garage, the Vibe offers space maximisation at its smartest.

FROM: \$403,095

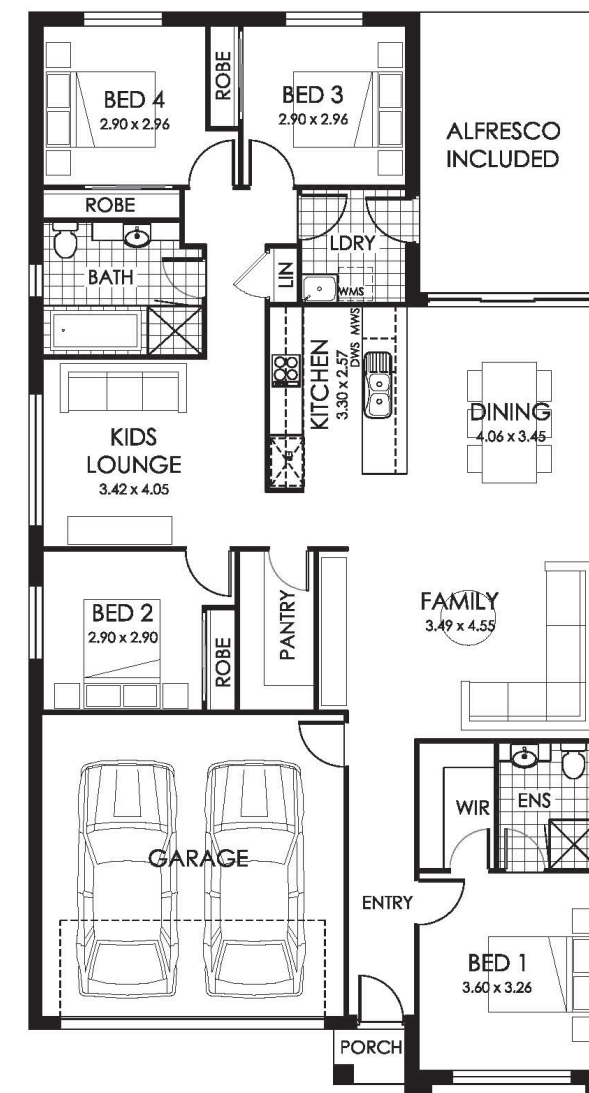
FROM
\$351,700*

Pre-selected facade options



Choose from one of 2 external colour scheme options available for each of these facades.

Floorplan



*The starting from price is based on a standard block which is up to 350m² with up to 500mm fall across the block, 'M' class soil classification, all services within boundaries, garage setback up to 5.5m from front boundary and even cut and fill. The starting from price is applicable to homes with the Vogue facade built in the Queanbeyan-Palerang regional council area only and is subject to a geotechnical report and engineering design and excludes additional site costs, site specific BASIX/EERS requirements, Local Complying Authority or developer/estate requirements and guidelines, bushfire, flood, acoustic, unforeseen site conditions, building adjacent to sewer requirements, landscaping, internal upgrades, section 7:11 and s7:12 contributions (if applicable), and bonds. Regional house price loading applies. Thrive Homes reserves the right to review its pricing at any time, without notice. All prices are relevant at the time of publishing and may be out of date or superseded. Further terms and conditions apply - for full terms and conditions for our fast-track promotion www.thrivehomes.com.au. Please speak to a Sales Consultant to discuss current detailed home pricing for different designs, inclusions and regions.

Helix 24

The award winning Helix offers the luxury of dual living spaces in a seamless open plan design. The entertainer's kitchen with island bench flows directly into the dining, family and alfresco spaces. The master bedroom with walk in robe sits as a retreat to the front of the home, with three further bedrooms and a second bathroom at the rear of the design.

FROM: \$432,065

FROM

\$377,900*

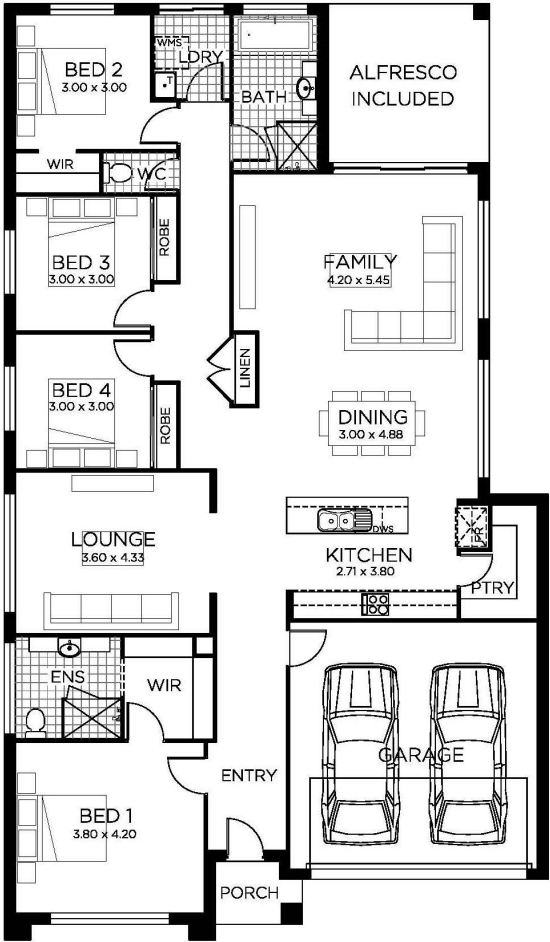


Pre-selected facade options



Choose from one of 2 external colour scheme options available for each of these facades.

Floorplan



*The starting from price is based on a standard block which is up to 350m² with up to 500mm fall across the block, 'M' class soil classification, all services within boundaries, garage setback up to 5.5m from front boundary and even cut and fill. The starting from price is applicable to homes with the Vogue facade built in the Queanbeyan-Palerang regional council area only and is subject to a geotechnical report and engineering design and excludes additional site costs, site specific BASIX/EERS requirements, Local Complying Authority or developer/estate requirements and guidelines, bushfire, flood, acoustic, unforeseen site conditions, building adjacent to sewer requirements, landscaping, internal upgrades, section 7.11 and s7.12 contributions (if applicable), and bonds. Regional house price loading applies. Thrive Homes reserves the right to review its pricing at any time, without notice. All prices are relevant at the time of publishing and may be out of date or superseded. Further terms and conditions apply - for full terms and conditions for our fast-track promotion www.thrivehomes.com.au. Please speak to a Sales Consultant to discuss current detailed home pricing for different designs, inclusions and regions.

Inclusions

KITCHEN	
Ovens	Artusi 600mm Electric Oven
Cooktop	Choice of; Artusi 600mm Gas Cooktop OR Artusi 600mm Electric Cooktop
Rangehood	Artusi 600mm Rangehood
Tapware	Chrome Sink Mixer
Sink	Double bowl sink
Splashback	Tiled splash back to Kitchen as per selected colour scheme
Benchtops	33mm Laminate Benchtop with rolled edge
Joinery and handles	Matt Laminate cabinetry as per selected colour scheme with Kickboards and Hafele handles (Horizontal to drawers & Vertical to cupboards)
Pantry	4x Melamine shelves
Overhead cabinets	Finger pull Overhead Cupboards including fridge space
BATHROOMS / ENSUITES	
Tapware	Chrome Basin Mixer Chrome 300mm Wall Spout with Wall Mixer to Bath Chrome Rail Shower with Wall Mixer to Shower
Mirrors	Floating frameless polished edge bathroom mirrors on backing board
Benchtops	33mm Laminate benchtops with rolled edge to all bathroom vanities
Vanity and handles	Floating vanity with matt Laminate soft close cabinets shadowline as per selected colour scheme Hafele handles (Vertical to cupboards)
Bath	Built in Bath 1675mm with Chrome waste
Shower	Framed shower screen with pivot door
Accessories	Semi-frameless shower screens with pivot doors, chrome trims and clear laminated glass
Toilet suite	Wall faced toilet suite
Tiling	2100mm high to shower recess, 500mm over bath, skirting tile to remainder. As per selected colour scheme
Recessed floor to wet areas	Flush finish to all wet areas from main floors
INTERNAL	
Frames and truss	Engineered steel frames and trusses
Ceiling height	2600mm Nominal ceiling heights to ground floor and 2450mm to first floor.
Internal Doors	Corinthian flush panel internal doors in pre-primed paint finish - 2340mm (H) to Ground Floor only (excludes wardrobes) & 2040mm (H) to First Floor
Front Door	Corinthian Madison 2340mm (H) - PMAD 104 entrance doors (with clear glass) in paint finish to all Facades
Bedroom robes	Mirrored sliding doors and 1 x melamine shelf and hanging rail*
Door stops	Plastic Wall/Door Cushions Stops

Door furniture	Lockwood Satin Chrome lever set to internal passage doors Lockwood Satin Chrome lever set with privacy set to bathroom, Ensuite, Powder room & WC Doors
Linen	Melamine shelves Four (4) to Linen cupboards
Skirting and architraves	67mm x 18mm bevelled edge profile architrave and skirting with painted finish
Cornice	90mm Cove cornice at the junction of wall and ceiling
Paint	Dulux 3 coat paint system to internal walls including 2 external paint colours, 1 internal wall colour, 1 ceiling colour, Dulux Gloss paint to doors and internal woodwork
Flooring	Ceramic Floor Tiles to Entry, Entry Hallway, Family, Dining/Meals and Kitchen (as per selected colour scheme) Carpet (as per selected colour scheme) to remainder of dwelling including standard underlay (Separate Lounge, Bedrooms, Bedroom Hallways and Stairs - if applicable)
Air-conditioning	One Panasonic Inverter 2.5Kw Split System Air Conditioning Unit to Main Living area, to be installed on an external wall
EXTERNAL	
Slab	Engineered concrete slab to suit 'M' class soil classification at 20MPA
Front entry door	Corinthian Madison 2340mm (H) - PMAD 104 entrance doors (with clear glass) in paint finish to all Facades
Laundry door	Corinthian AWO21 full clear glazed Laundry entrance door in painted finish (where applicable)
External door furniture	Lockwood Satin Chrome Lever Entrance Set & Deadlock
Metal roofing	Colorbond® roof as per selected colour scheme with 60mm Anticon blanket to the underside
Fascia and gutter	Colorbond® Fascia & Gutter with painted PVC Downpipes or Colorbond® downpipes when the Rainwater tank is not required
Garage door	Sectional door and motor as per selected colour scheme
Windows	Aluminium windows and sliding doors with Low-E glazing - or other glass specification where required to meet NCC 2022 requirements on standard floor plans and design options. Colours as per selected colour scheme including security keyed windows & door locks with obscure glass to Bathrooms, Ensuite & Powder room <i>(Excludes other floor plan/window changes which may impact compliance with NCC requirements, these will be raised as a variation)</i>
Alfresco	Engineered broom finished concrete slab with roof over plasterboard ceiling and boxed surround
Wall insulation	R2.0 Thermal batts to external walls including internal wall between Garage & House (Excludes external walls of Garage)
Ceiling insulation	R6.0 ceiling insulation (Excluding Garage, Alfresco, Porch & Decks)
Termite protection	Termite protection to pipe penetrations and perimeter cavity
SOLAR	
SOLAR SYSTEM	3.52kw Solar system with 3kw Solar Inverter

Choose your **Internal colour scheme**

Choose from 5 internal colour schemes available for your new home - Akoya, Aura, Echo, Ivy & Pure.



Akoya

Kitchen

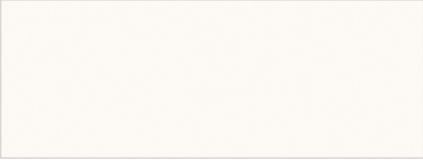
This scheme comprises of a light-toned palette that brings softness into the space and lends itself to warm, natural finishes and timber.

The fresh kitchen is softened with an Urban Grey benchtop and compliments Scandinavian or Coastal looks.

- A Cupboard colour**
Melamine White Cotton Matt
- B Benchtop**
Laminate Urban Slate
- C Kitchen Tiled Splashback**
United White Gloss (182174)*
- D Floor Tiles**
Belga Charcoal*



Kitchen & Bathrooms



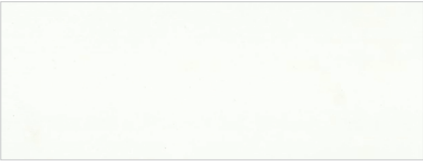
Cupboard Colour
Melamine White Cotton Matt



Benchtop
Laminate Urban Slate



Caesarstone® Benchtop
Urban™

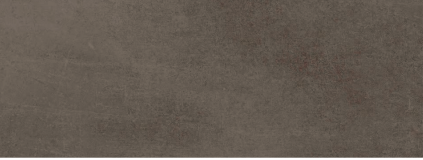


Kitchen & Laundry Tiled Splashback
United White Gloss (182174)*



Ravine to Overhead Cupboards
Ravine Drifted Oak

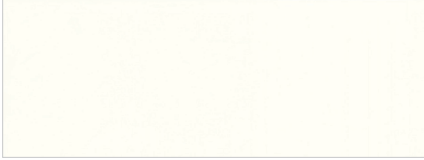
Flooring & Tiling



Main Floor and Wet Area Tiles
Belga Charcoal (main floor - 450 x 450)*
(wet area - 300 x 300)*



Carpet
Park Regis Simpson 43/8793*



Wet Area Wall Tiles
Sphere White Gloss (1221637)*

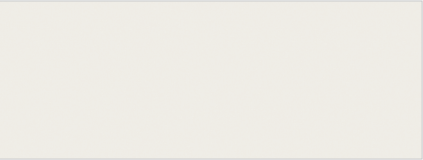


Premium Carpet
Green Bay Tide (VC4555)*



Laminate Flooring to Entry, Hallway, Kitchen, Dining, Living and Family
Oak Leaf Chalker's Ridge

Walls & Window Finishes



Wall Colour
Dulux Natural White PN1E1



Feature Wall Colour
Dulux Mud Pack P14B4

*Region dependant.

Aura

Kitchen

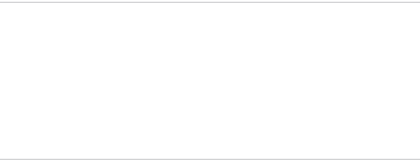
Aura is a fresh, crisp, classic white scheme. The monochromatic palette allows the space to be explored and personalised with layers of soft furnishings and accessories.

- A Cupboard colour**
Melamine Classic White Matt
- B Benchtop**
Laminate Snow Fabrini Matt
- C Kitchen Tiled Splashback**
United White Gloss (182174)*
- D Floor Tiles**
Belga Ivory*

On display at:
HomeWorld, Warnervale – Sienna 22
HomeWorld, Marsden Park – Aria 22
HomeWorld, Leppington – Zen 17



Kitchen & Bathrooms



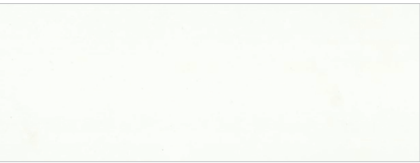
Cupboard Colour
Melamine Classic White Matt



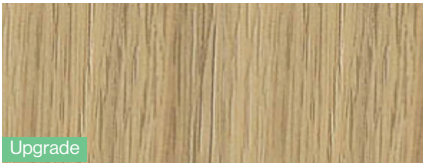
Benchtop
Laminate Snow Fabrini Matt



Caesarstone® Benchtop
Osprey™



Kitchen & Laundry Tiled Splashback
United White Gloss (182174)*



Overhead Cupboards
Ravine Natural Oak

Flooring & Tiling



Main Floor and Wet Area Tiles
Belga Ivory (main floor - 450 x 450)*
(wet area - 300 x 300)*



Carpet
Park Regis Bignell 40/8793



Wet Area Wall Tiles
Sphere White Gloss (1221637)*

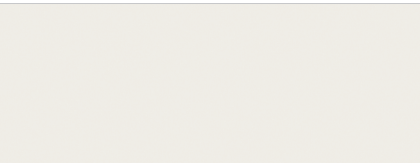


Premium Carpet
Green Bay Bright (VC4529)*



Laminate Flooring to Entry, Hallway, Kitchen, Dining, Living and Family
Oak Leaf Maritime Oak

Walls & Window Finishes



Wall Colour
Dulux Natural White PN1E1



Feature Wall Colour
Dulux Harold P15B7

*Region dependant.

Echo

Kitchen

The Echo scheme comprises of light wood grain cabinetry, which contrasts against the dark benchtop. The mixture of these materials creates form and space and allows the area to achieve an edgy, industrial feel.

- A Cupboard colour**
Melamine Riga Salt Finegrain
- B Benchtop**
Laminate Greystone Matt
- C Kitchen Tiled Splashback**
United Grey Gloss*
- D Floor Tiles**
Belga Charcoal*

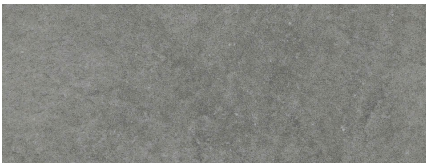
On display at:
HomeWorld, Box Hill – Sienna 22
HomeWorld, Leppington – Allira 24



Kitchen & Bathrooms



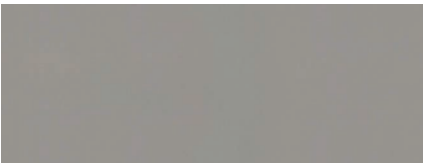
Cupboard Colour
Melamine Riga Salt Finegrain



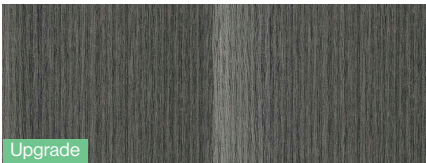
Benchtop
Laminate Greystone Matt



Caesarstone® Benchtop
Oyster™



Kitchen & Laundry Tiled Splashback
United Grey Gloss*

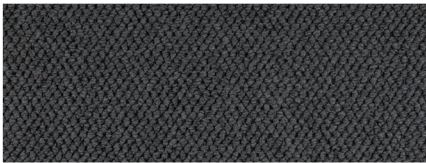


Overhead Cupboards
Ravine Char Oak

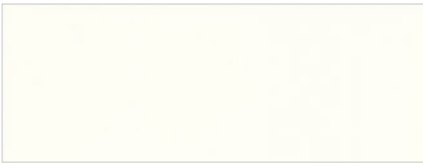
Flooring & Tiling



Main Floor and Wet Area Tiles
Belga Charcoal (main floor - 450 x 450)*
(wet area - 300 x 300)*



Carpet
Park Regis Bartlett 54/8793*



Wet Area Wall Tiles
Sphere White Gloss (1221637)*

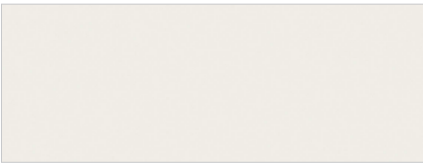


Premium Carpet
Green Bay Gulf (VC4520)*

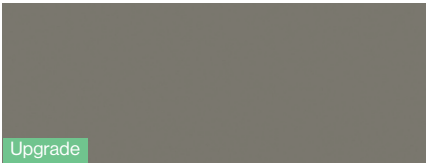


Laminate Flooring to Entry, Hallway, Kitchen, Dining, Living and Family
Oak Leaf Nordic Oak

Walls & Window Finishes



Wall Colour
Dulux Natural White PN1E1



Feature Wall Colour
Dulux Mavora PN1A7

*Region dependant.

Kitchen

This urban, contemporary scheme is developed using a blend of graphite greys and glossy whites. The on-trend materials are used to enhance the space to create a high contrast environment, with the use of mid-tone tiles to bring in elements of warmth.

- A Cupboard colour**
Melamine Cinder Matt
- B Benchtop**
Laminate Classic White Matt
- C Kitchen Tiled Splashback**
United Donkey Grey*
- D Floor Tiles**
Belga Taupe*

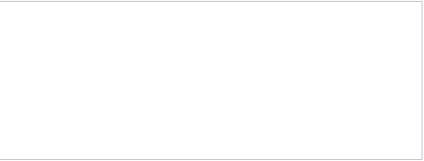
On display at:
HomeWorld, Marsden Park – Alysium 24
HomeWorld, Leppington – Vibe 21



Kitchen & Bathrooms



Cupboard Colour
Melamine Cinder Matt



Benchtop
Laminate Classic White Matt



Caesarstone® Benchtop
Ocean Foam™



Kitchen & Laundry Tiled Splashback
Spirited Pumice Gloss



Overhead Cupboards
Ravine Char Oak

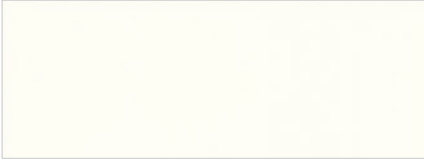
Flooring & Tiling



Main Floor and Wet Area Tiles
Belga Taupe (main floor - 450 x 450)*
(wet area - 300 x 300)*



Carpet
Park Regis Bartlett 54/8793*



Wet Area Wall Tiles
Sphere White Gloss (1221637)*

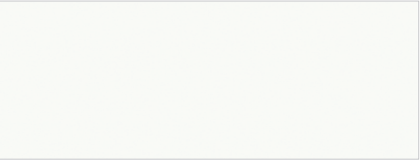


Premium Carpet
Green Bay Gulf (VC4520)*



Laminate Flooring to Entry, Hallway, Kitchen, Dining, Living and Family
Oak Leaf Paperbark

Walls & Window Finishes



Wall Colour
Dulux Vivid White



Feature Wall Colour
Dulux Boycott P15A7

*Region dependant.

Pure

Kitchen

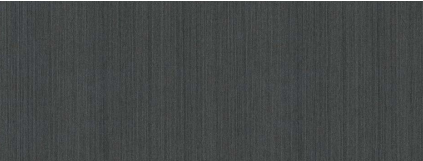
Pure is a contemporary architectural palette that creates mood and interest. The dark grain cabinetry with the ice snow benchtop is designed to work cohesively with the greys to achieve a tonal gradient.

- A Cupboard colour**
Melamine Cavia Lini Matt
- B Benchtop**
Laminate Argento Stone
- C Kitchen Tiled Splashback**
United White Gloss (182174)*
- D Floor Tiles**
Belga Grey*

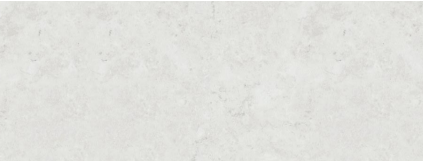
On display at:
HomeWorld, Marsden Park – Onyx 24
HomeWorld, Box Hill – Vibe 21
Googong – Espy 22



Kitchen & Bathrooms



Cupboard Colour
Melamine Cavia Lini Matt



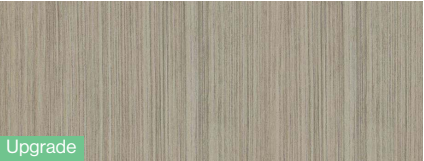
Benchtop
Laminate Argento Stone



Caesarstone® Benchtop
Ice Snow™



Kitchen & Laundry Tiled Splashback
United White Gloss (182174)*

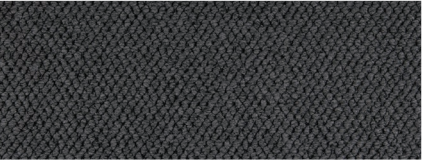


Overhead Cupboards
Ravine Tessuto Milan

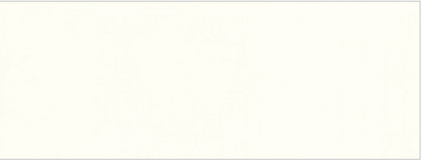
Flooring & Tiling



Main Floor and Wet Area Tiles
Belga Grey (main floor - 450 x 450)*
(wet area - 300 x 300)*



Carpet
Park Regis Bartlett 54/8793*



Wet Area Wall Tiles
Sphere White Gloss (1221637)*

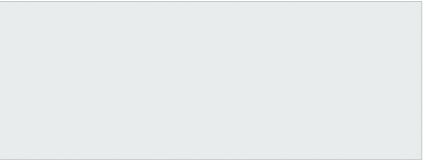


Premium Carpet
Green Bay Crust (VC4552)*



Laminate Flooring to Entry, Hallway, Kitchen, Dining, Living and Family
Oak Leaf Nordic Oak

Walls & Window Finishes



Wall Colour
Dulux Lexicon PW1G9



Feature Wall Colour
Dulux Namadji PN2E9

*Region dependant.

Choose your **External colour scheme**

Choose from 5 external colour schemes available for your
new home - Artison, Heston, Marquis, Nexus & Seneca



Artison

External Finishes

The Artison scheme is designed to create a chic point of difference to your home. The contrasting hues of light and dark accentuate the clean lines of the facade, and bring a calming balance to the design.

A Fascia and Window Frames
Surfmist®

B Bricks
PGH – Gibson
(Off White Mortar, Ironed Joint)

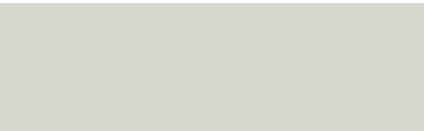
C Colorbond® Roof
Monument®

D Panel Lift Garage Door
Basalt®

On display:
HomeWorld, Leppington – Allira 24



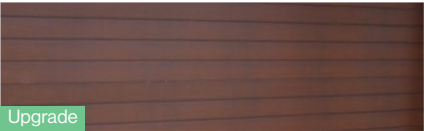
External Finishes



Fascia & Window Frame
Surfmist®



Bricks
PGH Gibson
(Off White Mortar, Ironed Joint)



Timbagrain Garage Door
Coaba Dawn

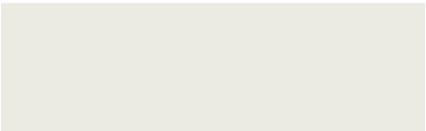


Slimline Panel Lift Garage Door
Basalt®

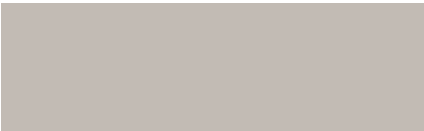
External Colours



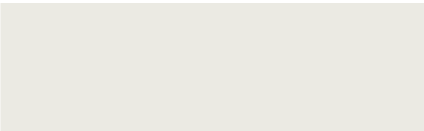
Single Storey: Bagged Paint Finish/Cladding
Dulux Heifer



Double Storey: Cladding
Dulux Whisper White B18
(Facade Dependant)



Double Storey: Bagged Paint Finish
Dulux Heifer P14B2



Painted Timber Posts
Dulux Whisper White
(Vogue & Deco Facade only)



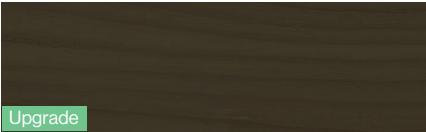
Timber Stained Battens
Intergrain Charcoal
(Ascot Facade only)



Driveway
Charcoal



Front Door
Dulux Heifer P14B2



Stained Front Door
Intergrain Charcoal

Roofing



Colorbond® Roof
Monument®

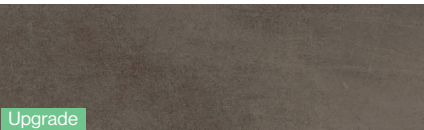


Gutter
Monument®



Roof Tiles including Sarking
Monier - Atura | Profile - Sambuca

External Tile Upgrades



Alfresco and Porch Tile
Belga Charcoal Textured

Heston

External Finishes

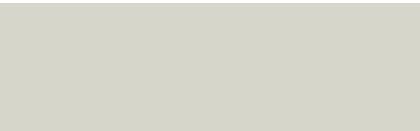
This contemporary facade has a timeless feel. The combination of Stepney, Surfmist and Wallaby creates a contemporary design with a natural Australian feel.

- A Fascia and Window Frames**
Surfmist®
- B Bricks**
Austral Everyday Engage
(Off White Mortar, Ironed Joint)

- C Colorbond® Roof**
Wallaby®
- D Panel Lift Garage Door**
Surfmist®
- On display:**
HomeWorld, Leppington – Zen 17



External Finishes



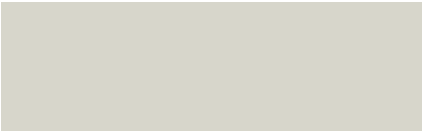
Fascia & Window Frame
Surfmist®



Bricks
Austral Everyday Engage
(Off White Mortar, Ironed Joint)



Timbagrain Garage Door
Coaba Dawn

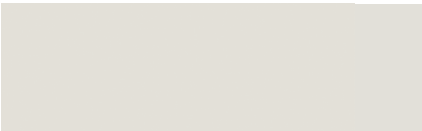


Slimline Panel Lift Garage Door
Surfmist®

External Colours



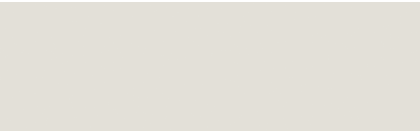
Single Storey: Bagged Paint Finish/Cladding
Dulux Stepney GR11



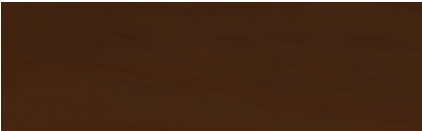
Double Storey: Cladding
Dulux Pipe Clay P16A1
(Facade Dependant)



Double Storey: Bagged Paint Finish
Dulux Stepney GR11



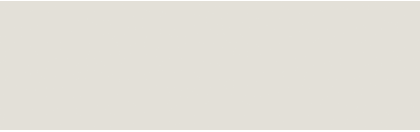
Painted Timber Posts
Dulux Pipe Clay P16A1Q
(Vogue & Deco Facade Only)



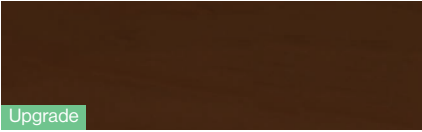
Timber Stained Battens
Intergrain Rich Chocolate
(Ascot Facade only)



Driveway
Charcoal



Front Door
Dulux Pipe Clay Quarter (P16A1Q)



Stained Front Door
Intergrain Rich Chocolate

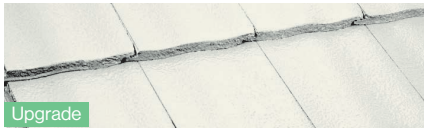
Roofing



Colorbond® Roof
Wallaby®



Gutter
Wallaby®



Roof Tiles including Sarking
Monier – Atura | Profile – Wild Rice

External Tile Upgrades



Alfresco and Porch Tile
Belga Grey Textured

Marquis

External Finishes

The well-defined Marquis gives a tailored finish to any home. The Mud Pack and Woodland Grey colour tones ensure the facade will enhance any streetscape.

A Fascia and Window Frames
Woodland Grey®

B Bricks
Austral – Everyday – Leisure
(Off White Mortar, Ironed Joint)

C Colorbond® Roof
Woodland Grey®

D Panel Lift Garage Door
Woodland Grey®

On display:
HomeWorld, Marsden Park – Alysium 24
HomeWorld, Leppington – Vibe 21



External Finishes



Fascia & Window Frame
Woodland Grey®



Bricks
Austral Everyday Leisure
(Off White Mortar, Ironed Joint)



Bricks
Austral Whitsunday Orpheus (Off White Mortar, Ironed Joint)



Timbagrain Garage Door
Classic Cedar



Slimline Panel Lift Garage Door
Woodland Grey®

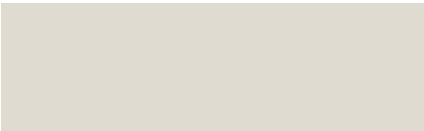
External Colours



Single Storey: Bagged Paint Finish/Cladding
Dulux Mud Pack P14B4



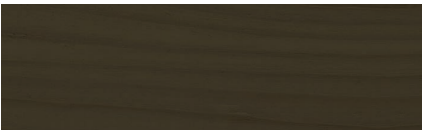
Double Storey: Bagged Paint Finish
Dulux Mud Pack P14B4



Double Storey: Cladding
Dulux White Duck A216



Painted Timber Posts
Dulux Terrible Billy PN1B9
(Vogue & Deco Facade only)



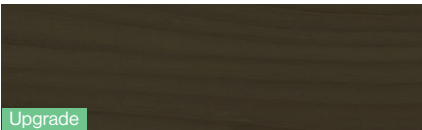
Timber Stained Battens
Intergrain Charcoal
(Ascot Facade only)



Driveway
Charcoal



Front Door
Dulux Terrible Billy PN189



Stained Front Door
Intergrain Charcoal

Roofing



Colorbond® Roof
Woodland Grey®

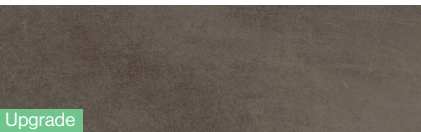


Gutter
Woodland Grey®



Roof Tiles including Sarking
Monier – Atura | Profile – Wollemi

External Tile Upgrades



Alfresco and Porch Tile
Belga Charcoal Textured

Nexus

External Finishes

The warm colour palette, natural timber grains and natural tones of the Nexus facade sets the tone for a welcoming home.

A Fascia and Window Frames
Woodland Grey®

B Bricks
PGH – Desert – Sinai
(Off White Mortar, Ironed Joint)

C Colorbond® Roof
Woodland Grey®

D Panel Lift Garage Door
Gully®



External Finishes



Fascia & Window Frame
Woodland Grey®



Bricks
PGH Desert Sinai (Off White Mortar, Ironed Joint)



Timbagrain Garage Door
Coaba Dawn



Slimline Panel Lift Garage Door
Gully®

External Colours



Single Storey: Bagged Paint Finish/Cladding
Dulux Namadji GR22



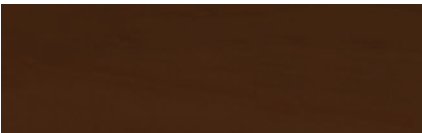
Double Storey: Cladding
Dulux Paving Stone P15A3



Double Storey: Bagged Paint Finish
Dulux Namadji GR22



Painted Timber Posts
Dulux Paving Stone P15A3
(Vogue & Deco Facade only)



Timber Stained Battens
Intergrain Rich Chocolate
(Ascot Facade only)



Driveway
Charcoal



Front Door
Dulux Namadji GR22



Stained Front Door
Intergrain Rich Chocolate

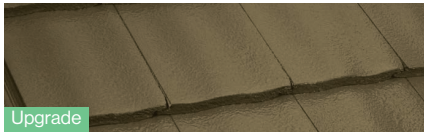
Roofing



Colorbond® Roof
Woodland Grey®

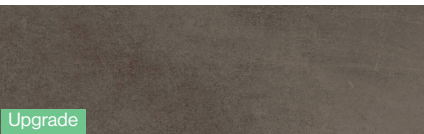


Gutter
Woodland Grey®



Roof Tiles including Sarking
Monier – Atura | Profile – Aniseed

External Tile Upgrades



Alfresco and Porch Tile
Belga Charcoal Textured

Seneca

External Finishes

The Seneca is a clean curated scheme. The Dune and Grey Pebble Half features on the facade to create a premium, fresh and clean finish.

A Fascia and Window Frames
Surfmist®

B Bricks
PGH – Desert – Sinai
(Off White Mortar, Ironed Joint)

C Colorbond® Roof
Dune®

D Panel Lift Garage Door
Surfmist®



External Finishes



Fascia & Window Frame
Surfmist®



Bricks
PGH Desert Sinai (Off White Mortar, Ironed Joint)

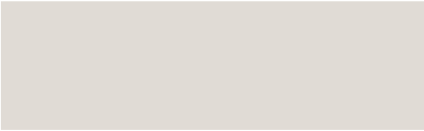


Timbagrain Garage Door
Classic Cedar

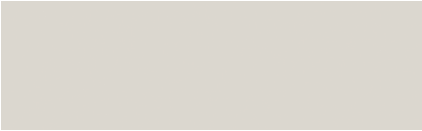


Slimline Panel Lift Garage Door
Surfmist®

External Colours



Single Storey: Bagged Paint Finish/Cladding
Dulux Grey Pebble Half P14B1H



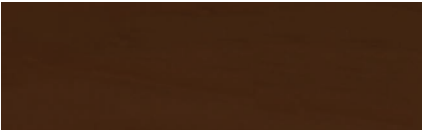
Double Storey: Cladding
Dulux Grey Pebble Half P14B1H



Double Storey: Bagged Paint Finish
Dulux Calf Skin P14B3



Painted Timber Posts
Dulux Calf Skin P14B3
(Vogue & Deco Facade only)



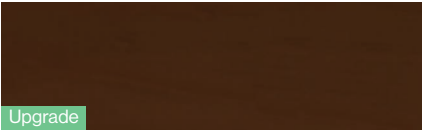
Timber Stained Battens
Intergrain Rich Chocolate
(Ascot Facade only)



Driveway
Charcoal



Front Door
Dulux Calf Skin P14B3



Stained Front Door
Intergrain Rich Chocolate

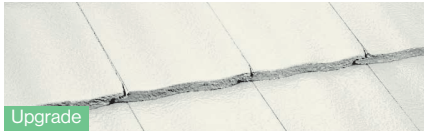
Roofing



Colorbond® Roof
Dune®



Gutter
Dune®



Roof Tiles including Sarking
Monier – Atura | Profile – Wild Rice

External Tile Upgrades



Alfresco and Porch Tile
Belga Taupe Textured (79939) 450 x 450

ThriveHomes

1300 921 383
thrivehomes.com.au

DISCLAIMER: *House type dependent. References to block size are based upon a standard block which is up to 700m² with up to 1m fall across the block. "M" class soil classification, all services within boundaries, Garage setback up to 5.5m from front boundary, even cut and fill.

Thrive Homes Pty Ltd considers safety in every aspect of your home, from design through to handover. During the construction phase, all components, including those that are at a height of 3.0 metres or more, can be completed safely due to Thrive Homes strict policies, work methods and safety controls. However, once the finished house is handed over to the client, Thrive Homes can no longer ensure the safety of any person that needs to maintain any components (for example, but not limited to, light fittings, fixtures, antennas or gutter cleaning). The client must be aware that the maintenance of any components that are at a height of 3.0 metres or more, will require the implementation of adequate safety control measures and the service of a qualified person that is trained in safe work at heights

In respect of all home designs contained in this brochure, the term "Materials" includes:

- all images of any kind produced by Thrive Homes; and
- pictures of fixtures, fittings (lighting, electrical or otherwise) or finishes, landscaping and outdoor items, floor coverings, doors, furniture, kitchen, bathroom and decorative items.

The Materials are visual aids and are for illustrative purposes only. Dimensions, sketches and computer renderings are approximate only. The Materials do not constitute a binding representation, warranty, obligation or guarantee as to a final product and you may not rely on them as such.

Materials may show items:

- outside specifications described in this brochure;
- not supplied by Thrive Homes (which are subject to third party supply arrangements); or
- only available in certain home designs; or
- only available when specifically selected as inclusions, which are not included in the price of standard inclusions for a particular home design (as described on the website).

If an item is stated in the Materials to be a specified inclusion Thrive Homes reserves the right to substitute a specified inclusion for an item of equivalent quality and/or finish.

Thrive Homes will not be liable for any loss or damage resulting from your reliance on the Materials.

Thrive Homes may make amendments to the homes referred to in this document at any time, in which case the Materials may no longer represent the final product. Customers must first speak to a Thrive Homes consultant to obtain detailed home pricing for different designs and inclusions.

Each customer's Contract of Sale contains specific details of inclusions and exclusions, as well as full details and terms and conditions.