



Helix

HOME DESIGN



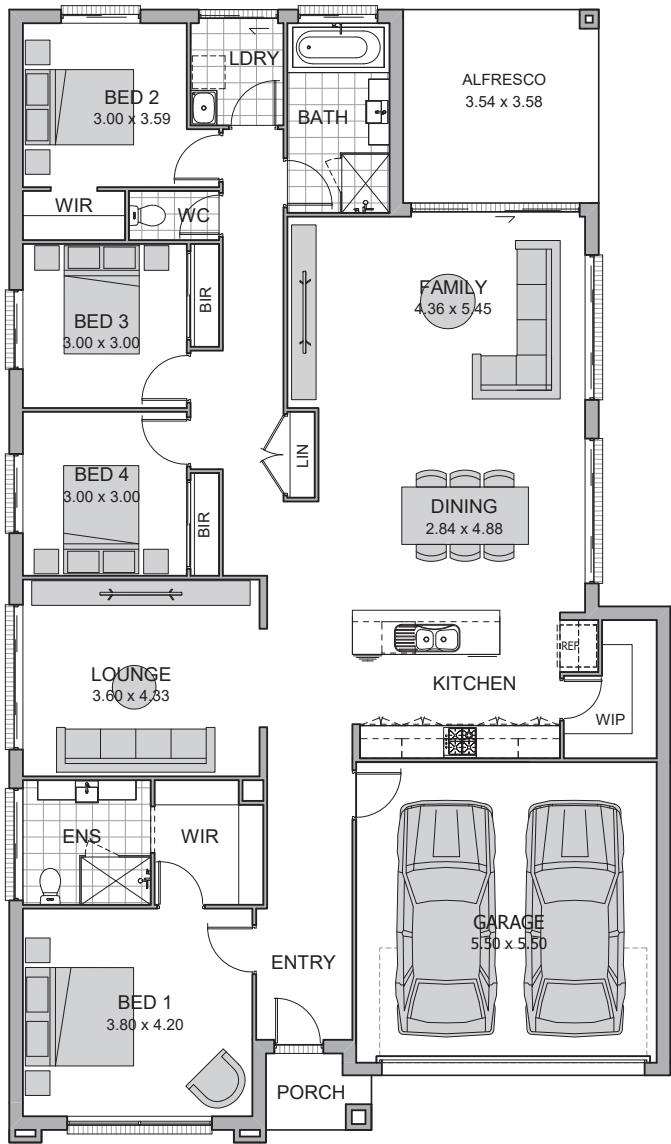


Helix

The award winning Helix offers the luxury of dual living spaces in a seamless open plan design. The entertainer's kitchen with island bench flows directly into the dining, family and alfresco spaces. The master bedroom with walk in robe sits as a retreat to the front of the home, with three further bedrooms and a second bathroom at the rear of the design.

Helix 24

4 bedrooms 2 bathrooms 2 car spaces 24.5 sq



HOME DETAILS

Total Footprint	228.69m ²	Alfresco	12.67m ²
Living	180.58m ²	Overall Width	12.10m
Garage	32.95m ²	Overall Length	20.73m
Porch	2.49m ²		

Standard Lot Width 14m

Helix Façades







For more information, please ask your new home consultant or call 1300 223 345.

rawsonhomes.com.au

DISCLAIMER: Photographs, artist impressions and other pictures in this brochure are for illustrative purposes only and may show fixtures, fittings or finishes which are not supplied by Rawson Homes Thrive, or which are only available in some Rawson Homes Thrive designs or when selected as inclusions above the standard inclusions for a particular design. This may include landscaping and outdoor items, floor coverings, furniture, kitchen, bathroom and light fittings and decorative items, which are shown as examples only. The starting from price is based on a standard block which is up to 350m² with up to 500mm fall across the block, 'M' class soil classification, all services within boundaries, garage setback up to 5.5m from front boundary and even cut and fill. The starting from price is applicable to homes built in the Sydney Metro region only and is subject to a geotechnical report and engineering design and excludes additional site costs, site specific BASIX/EERS requirements, Local Complying Authority or developer/estate requirements and guidelines, bushfire, flood, acoustic, unforeseen site conditions, building adjacent to sewer requirements, landscaping, internal upgrades, section 7.11 and s7.12 contributions (if applicable), and bonds. Regional house price loading applies. Rawson Homes Thrive reserves the right to review its pricing at any time, without notice. All prices are relevant at the time of publishing and may be out of date or superseded. Please speak to a Rawson Homes Thrive Sales Consultant to discuss current detailed home pricing for different designs, inclusions and regions.

Builders Licence Number NSW 301349C | ABN 99 613 679 333.