



ThriveHomes

Zepel 25

17 Patrick Dr, Watagan Park

Display Home for Sale **\$725,000**
6.0% Rental Return*

Lot size 453.6m²

5 **3** **2**
bed bath car

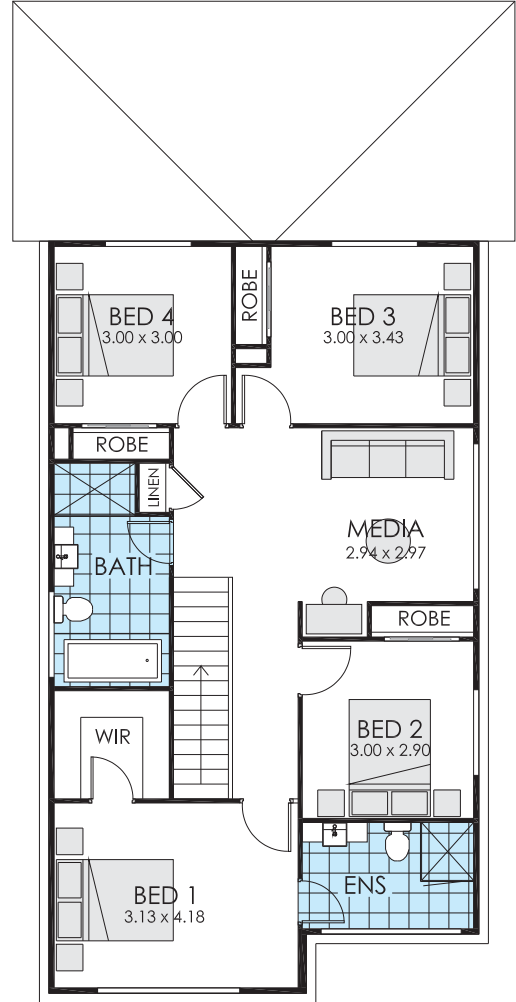
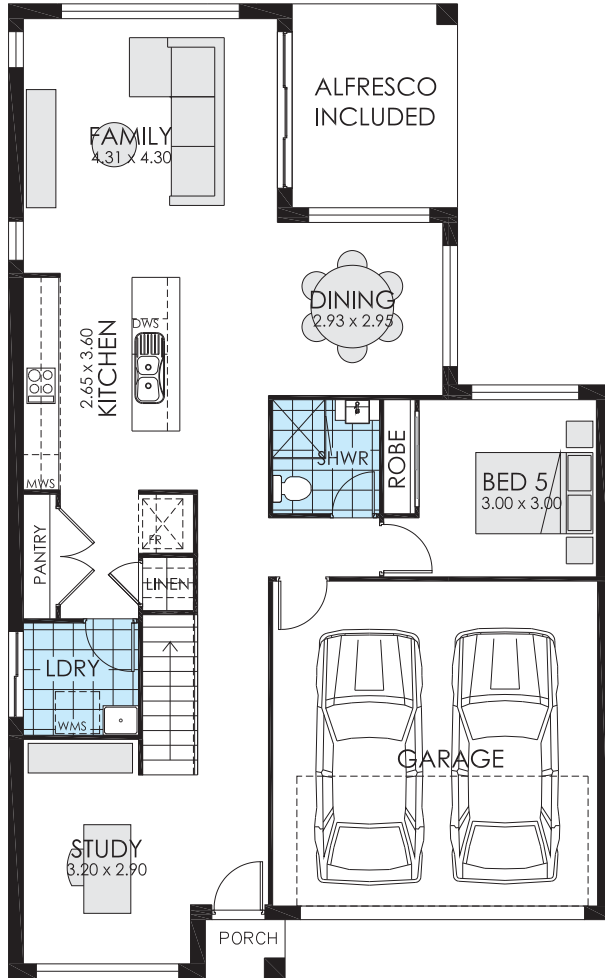
25.3 SQ

Ground Floor	102.17 m ²
First Floor	90.19 m ²
Garage	32.83 m ²
Porch	6.03 m ²
Alfresco	9.66 m ²
Total	240.88 m ²
Overall Width	10.200 m
Overall Length	17.500 m

**BUILD
SMART**

1300 921 383
thrivehomes.com.au

DISCLAIMER: *Rent is calculated at a fixed rate of 6.0% p.a. of the contract price, paid monthly inclusive of GST and all outgoings and utilities (excluding electricity usage). Minimum lease terms apply. Thrive Homes will maintain the home during the lease term. Thrive Homes signage and fencing will be in place during the lease and will be removed prior to customer taking possession of the home at the end of the lease term. Builders Licence Number NSW 301349C ACT 2020552 ABN 99 613 679 333



NOTE:
The floorplan is for indicative purposes only and may not include all features presented in the display.

Zepel 25

17 Patrick Dr, Watagan Park

5 **3** **2**
bed bath car

25.3 SQ

Ground Floor	102.17 m ²
First Floor	90.19 m ²
Garage	32.83 m ²
Porch	6.03 m ²
Alfresco	9.66 m ²
Total	240.88 m ²
Overall Width	10.200 m
Overall Length	17.500 m