



ThriveHomes

# Alysium 24

28 Donald St, Marsden Park

**4** **2** **2**  
bed bath car

Display Home for Sale \$1,150,000

6.0% Rental Return\*

Lot size 375m<sup>2</sup>

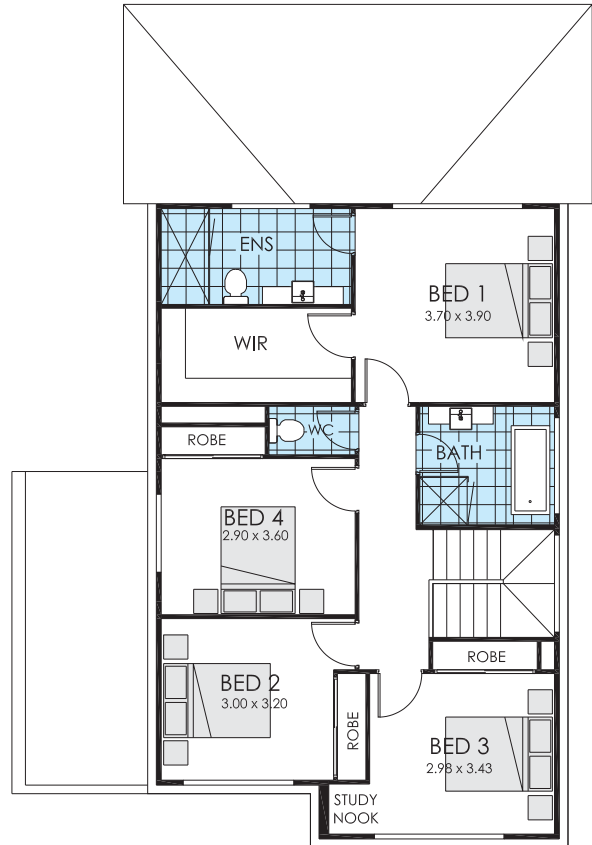
**23.7 SQ**

Ground Floor	102.00 m <sup>2</sup>
First Floor	88.48 m <sup>2</sup>
Garage	33.58 m <sup>2</sup>
Porch	4.90 m <sup>2</sup>
Alfresco	10.68 m <sup>2</sup>
Total	239.59 m <sup>2</sup>
Overall Width	10.320 m
Overall Length	18.700 m

**BUILD  
SMART**

1300 921 383  
thrivehomes.com.au

DISCLAIMER: \*Rent is calculated at a fixed rate of 6.0% p.a. of the contract price, paid monthly inclusive of GST and all outgoings and utilities (excluding electricity usage). Minimum lease terms apply. Thrive Homes will maintain the home during the lease term. Thrive Homes signage and fencing will be in place during the lease and will be removed prior to customer taking possession of the home at the end of the lease term. Builders Licence Number NSW 301349C ACT 2020552 ABN 99 613 679 333



## Alysium 24

28 Donald St, Marsden Park

**4** **2** **2**  
bed bath car

**23.7 SQ**

Ground Floor	102.00 m <sup>2</sup>
First Floor	88.48 m <sup>2</sup>
Garage	33.58 m <sup>2</sup>
Porch	4.90 m <sup>2</sup>
Alfresco	10.68 m <sup>2</sup>
Total	239.59 m <sup>2</sup>
Overall Width	10.320 m
Overall Length	18.700 m