



ThriveHomes

Sienna 22

13 Gizi St, Box Hill

Display Home for Sale \$1,111,500

6.5% Rental Return*

Lot size 411.4m²

3 **2** **2**
bed bath car

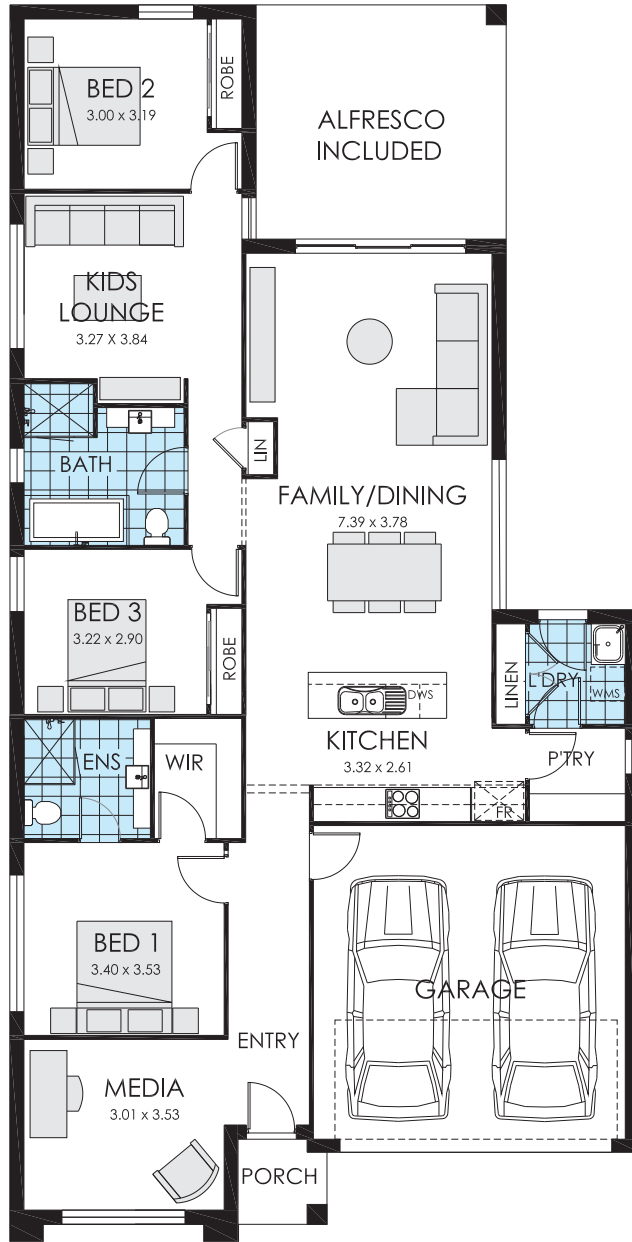
22.1 SQ

Living	152.77 m ²
Garage	33.41 m ²
Porch	2.26 m ²
Alfresco	18.21 m ²
Total	206.65 m ²
Overall Width	11.100 m
Overall Length	21.610 m

**BUILD
SMART**

1300 921 383
thrivehomes.com.au

DISCLAIMER: *Rent is calculated at a fixed rate of 6.5% p.a. of the contract price, paid monthly inclusive of GST and all outgoings and utilities (excluding electricity usage). Minimum lease terms apply. Thrive Homes will maintain the home during the lease term. Thrive Homes signage and fencing will be in place during the lease and will be removed prior to customer taking possession of the home at the end of the lease term. Builders Licence Number NSW 301349C ACT 2020552 ABN 99 613 679 333



NOTE:
The floorplan is for indicative purposes only and may not include all features presented in the display.

Sienna 22

13 Gizi St, Box Hill

3 **2** **2**
bed bath car

22.1 SQ

Living	152.77 m ²
Garage	33.41 m ²
Porch	2.26 m ²
Alfresco	18.21 m ²
Total	206.65 m²
Overall Width	11.100 m
Overall Length	21.610 m